



## 235c Elmdon Road, Selly Oak, Birmingham, B29 7LF

### £3,952 Per Calendar Month



2026/2027 ACADEMIC YEAR Stunning Student Accommodation Suitable for Students or Professionals

LOW DEPOSIT: £400/person (based on a group of 8 people)

Centrally located, just a 10-minute walk to the south gate of the University of Birmingham.

Newly refurbished to a high standard, ensuring a comfortable and modern living experience.

Spacious interior with no single rooms—every bedroom is generously sized.

Amenities include central heating, double glazing, and a security alarm for peace of mind.

The property boasts a sizable back garden and a front drive, providing convenient off-road parking options.

Available: Bills Package for only £22.47 per person per week

All MKP Management properties are fitted with a security alarm.

Looking for modern, spacious, and secure student accommodation for the 2026/2027 academic year? This stunning 8-bedroom house in Selly Oak offers everything you need for a comfortable and stylish stay — ideal for University of Birmingham students or young professionals seeking convenience and quality.

Don't miss your chance to view this exceptional property. Schedule a viewing by appointment only with MKP Management. Your dream home in Selly Oak awaits!

#### Viewing

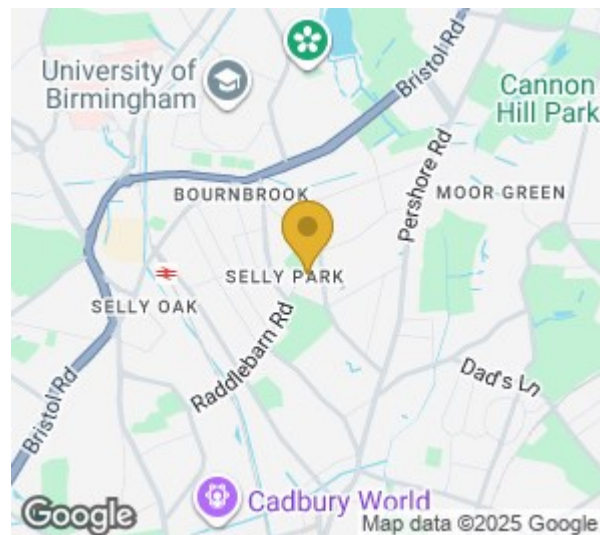
Please contact our MKP MANAGEMENT Office on 0121 472 5897

if you wish to arrange a viewing appointment for this property or require further information.



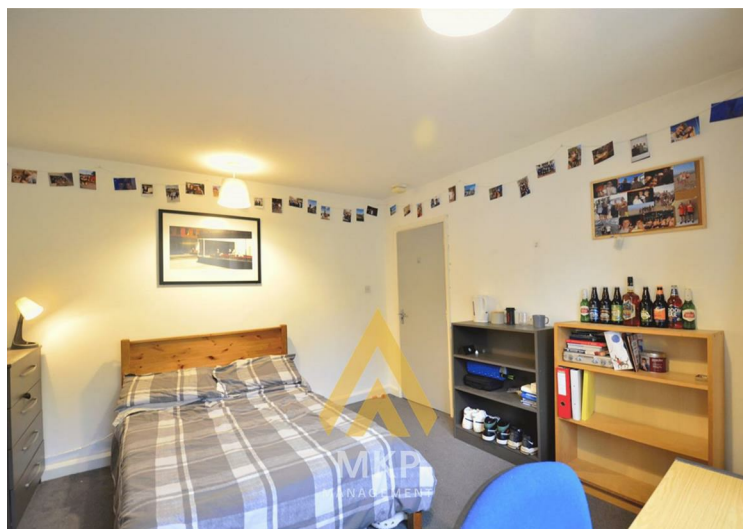
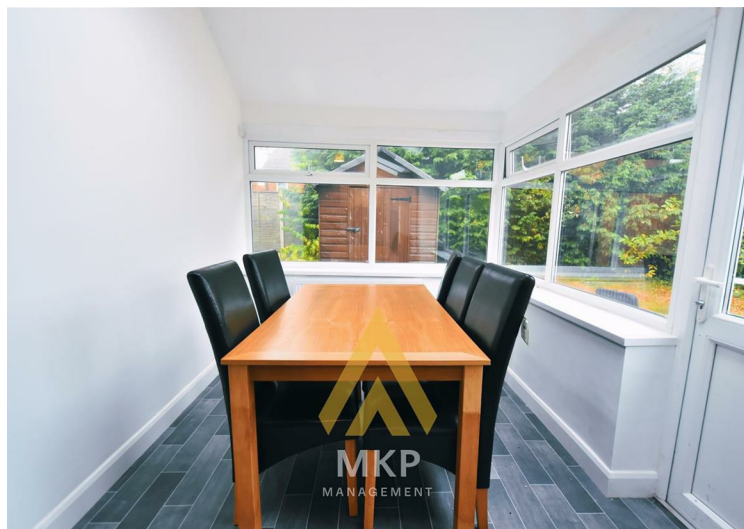


43 Elmdon Road, Birmingham



Energy Efficiency Rating	
Current	Potential
64	73
Very energy efficient - lower running costs (92 plus) A (81-91) B (69-80) C (55-68) D (38-54) E (21-38) F (1-20) G Not energy efficient - higher running costs	
England & Wales	
EU Directive 2002/91/EC	

Environmental Impact (CO <sub>2</sub> ) Rating	
Current	Potential
54	65
Very environmentally friendly - lower CO <sub>2</sub> emissions (92 plus) A (81-91) B (69-80) C (55-68) D (38-54) E (21-38) F (1-20) G Not environmentally friendly - higher CO <sub>2</sub> emissions	
England & Wales	
EU Directive 2002/91/EC	



These particulars, whilst believed to be accurate are set out as a general outline only for guidance and do not constitute any part of an offer or contract. Intending purchasers should not rely on them as statements of representation of fact, but must satisfy themselves by inspection or otherwise as to their accuracy. No person in this firm's employment has the authority to make or give any representation or warranty in respect of the property.